

DIRECTIONS TO FBMP SITE AT

Bear Swamp Natural Area

WOLCOTT, VT

Site established by Chris Rimmer 1990; updated and reflagged with new treetags, 28 April, 2021 by Steve Faccio, Bryan Pfeiffer, and Sean Beckett.

Bear Swamp is best accessed from Cross Rd, 3 miles N of Rt. 15. Turn north off Rt. 15 onto Town Hill Rd. just west of Wolcott village. Continue about 2.5 miles and turn right (east), onto Cross Rd. Go about 0.5 miles and park on the left shoulder at 44.58718, -72.43728, just before the driveway. Quietly walk down the driveway and follow the trail from the NW corner of the property down into Bear Swamp.

***NOTE:** Points 1 and 2 are close together (130m); be careful to avoid double-counting individual birds when at these two stations.*

All bearings are Magnetic North.

POINT 1 – Follow the trail N for a couple hundred meters then navigate with GPS to Point 1 located on a 6” dbh balsam fir flagged with blue and marked with an aluminum treetag (BS 1).

POINT 2 – To reach Point 2, head SSW (~190°) for 130m. The point is located on a 6” dbh balsam fir flagged in blue with an aluminum treetag.

POINT 3 – To reach Point 3, head SE (~135°) for 210m. The point is again located on a 6” balsam fir on the edge of a thick stand of young fir, shortly after crossing the Bear Swamp trail.

POINT 4 – To reach Point 4, head E (~95°) for 200m, located on a 3” dbh red spruce.

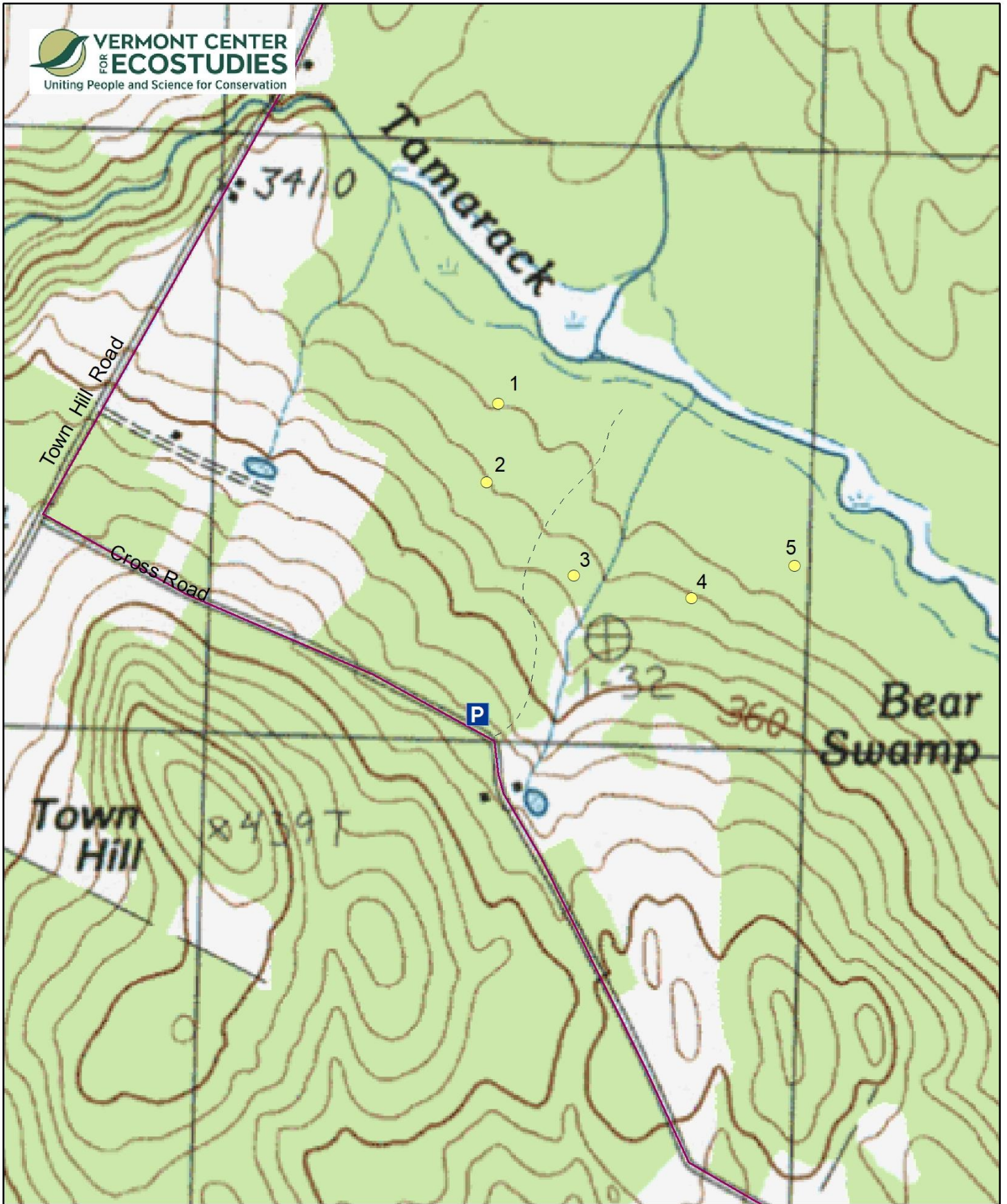
POINT 5 – The last station is 180m to the NE (~70°) on a 4” dbh fir.

To reach your vehicle, backtrack to Point 4 and continue in a WSW direction to the trail.

Point Count Coordinates

Point Count	LAT	LONG
1	44.591670	-72.436176
2	44.590492	-72.436424
3	44.589150	-72.434660
4	44.588755	-72.432123
5	44.589244	-72.429961

***NOTE:** Surrounding each point count station are three vegetation plots, each located 30 m away on **magnetic** bearings of 0°, 120°, and 240°. They are labeled with treetags inscribed with the point count number and a letter corresponding to the bearing: B (0°), C (120°), and D (240°). Be careful not to confuse these points with the actual point count stations.*



Forest Bird Monitoring Program -- Bear Swamp

 Point Counts